



# GAT MONTHLY MEMBERSHIP PROGRESS REPORT

Results as of: 11/30/2023

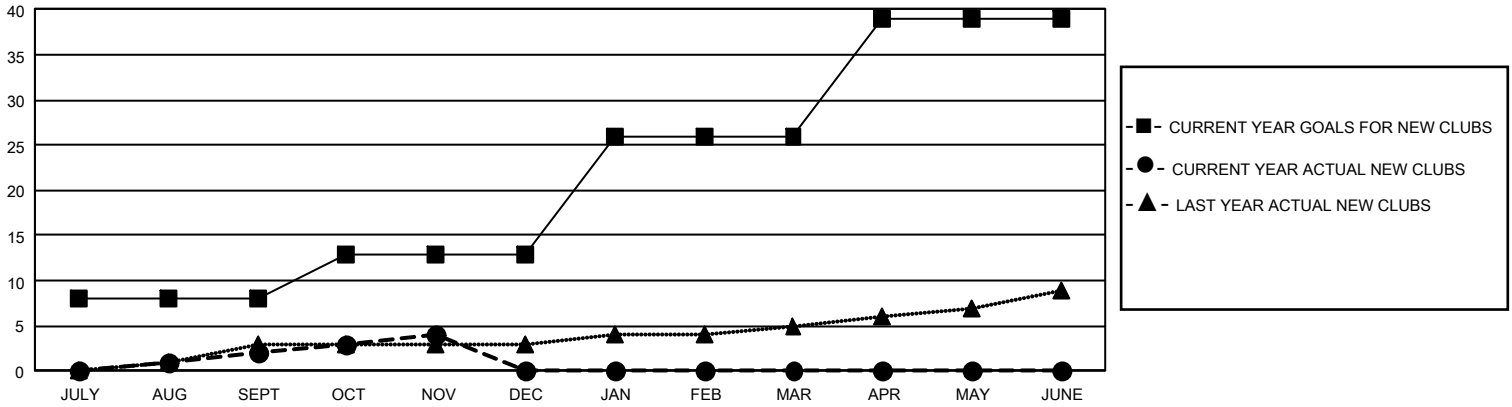
## GMT Constitutional Area 1, Group B

REPORT DOES NOT INCLUDE CLUBS IN UNDISTRICTED AREAS.

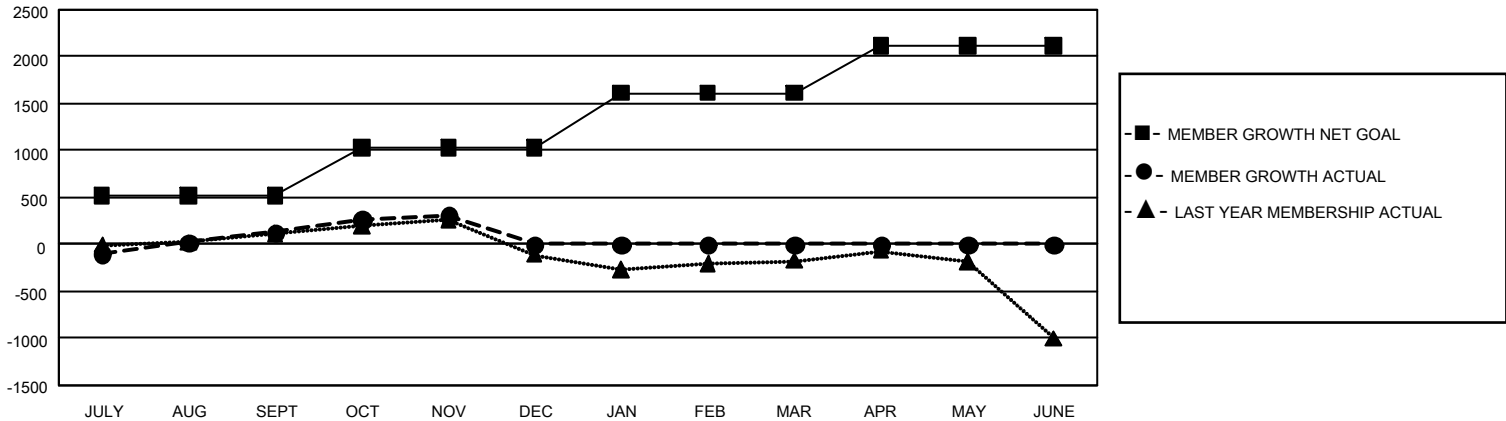
Clubs			
RESULTS FOR 2023-2024			
QUARTER	NEW CLUB GOAL	NEW CLUBS	DROPPED CLUBS
JULY/AUG/SEPT	24	2	5
OCT/NOV/DEC	15	2	1
JAN/FEB/MAR	39	0	0
APR/MAY/JUNE	39	0	0

Members			
RESULTS FOR 2023-2024			
QUARTER	MEMBER GROWTH NET GOAL	MEMBER GROWTH ACTUAL	DROPPED MEMBERS ACTUAL (including transfers)
JULY/AUG/SEPT	518	1,246	971
OCT/NOV/DEC	511	669	440
JAN/FEB/MAR	582	0	0
APR/MAY/JUNE	501	0	0

GOALS AND ACTUAL NEW CLUBS CUMULATIVE



GOALS AND ACTUAL MEMBERS CUMULATIVE



<b>DROPPED CLUBS: 6</b>	458 CLUBS OF 1,015 ADDED 1 OR MORE NEW MEMBERS	<b><u>GENDER DISTRIBUTION</u></b>	
		MALE 15,910 (57.92%) FEMALE 11,536 (42.00%) NON BINARY 2 (0.01%) PREFER NOT TO ANSWER 20 (0.07%)	
<b><u>DROPPED MEMBERS</u></b>		<a href="#">CLICK HERE FOR CUMULATIVE MEMBERSHIP DATA</a>	TOTAL FAMILY UNIT MEMBERS 5,593
DECEASED 159 CLUB CANCELLED 13 OTHER 1,241 <b>TOTAL 1,413</b>	FAMILY MEMBERS PAYING HALF DUES 2,949		